

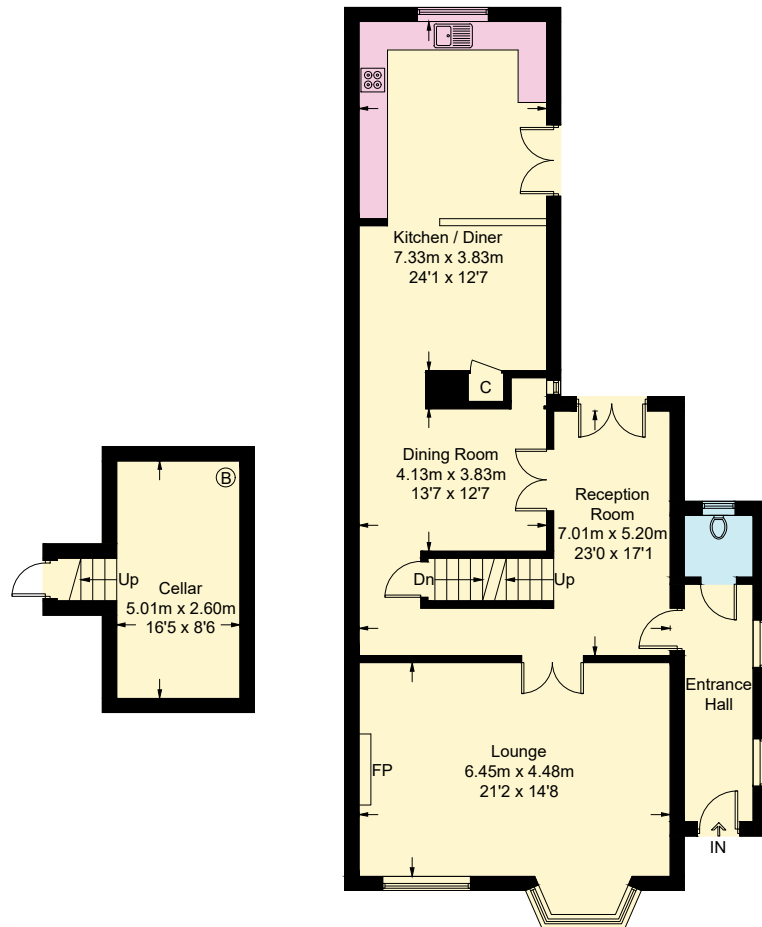
# 7 Marine Road, Colwyn Bay, LL29 8PH

Approximate Gross Internal Area = 281.2 sq m / 3027 sq ft

Cellar = 14.2 sq m / 153 sq ft

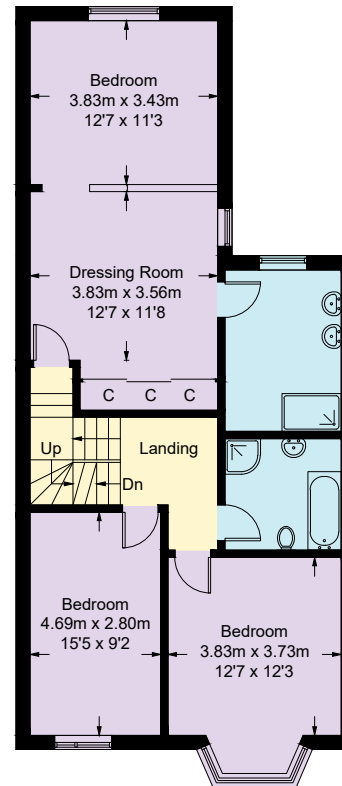
Outbuildings = 46.9 sq m / 505 sq ft

Total = 342.3 sq m / 3685 sq ft

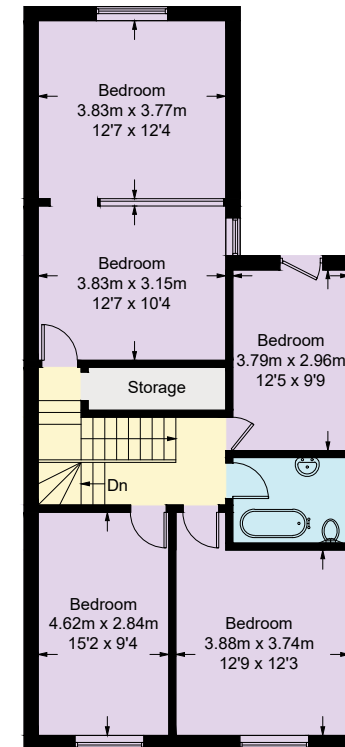


Cellar

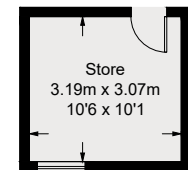
Ground Floor



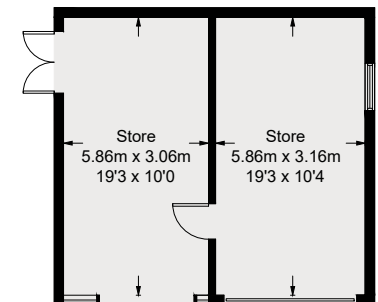
First Floor



Second Floor



(Not Shown In Actual Location / Orientation)



(Not Shown In Actual Location / Orientation)

This plan is for layout guidance only. Not drawn to scale unless stated. Windows and door openings are approximate. Whilst every care is taken in the preparation of this plan, please check all dimensions, shapes and compass bearings before making any decisions reliant upon them.

Fourlabs.co © 2025 (ID1232077)